



SWISSCO LEARNING EVENT

ROSELYN FOSUAH ADJEI

Director Climate Change
Forestry Commission of Ghana

22nd October, 2021
Zurich

● GHANA'S REDD+ STRATEGY

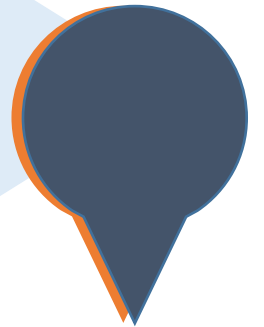
Ghana Cocoa Forest REDD+ Programme (GCFRP)-
IMPLEMENTATION UNDERWAY

Coastal Mangrove REDD+ Programme

Ghana Shea Landscape Emission Reduction Programme(GSLERP)
-PRE-LAUNCHED

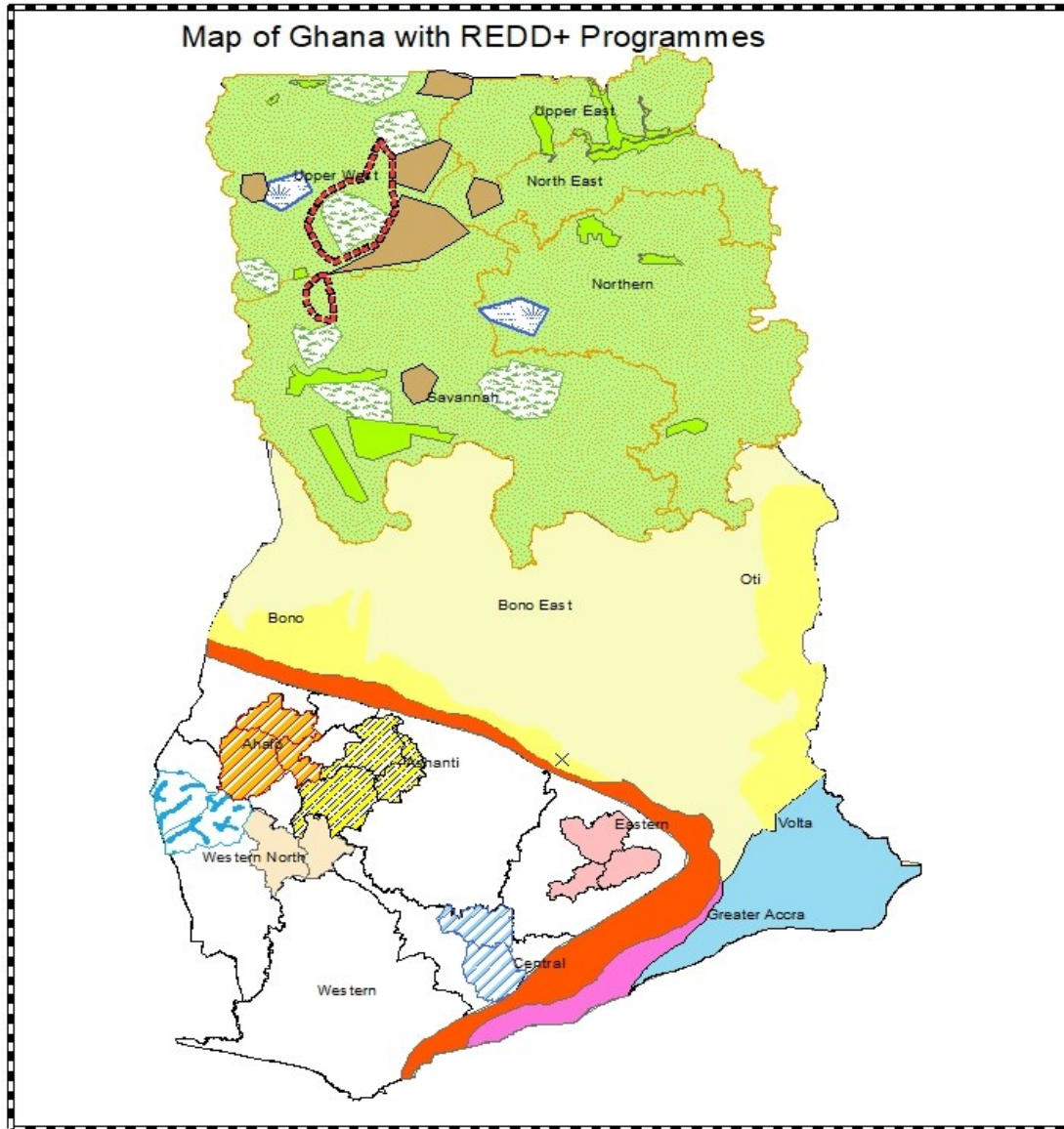
Togo Plateau REDD+ Programme

Transition REDD+ Programme



Forest and Wildlife Policy 2012, Climate Change Policy, 2013

● MAP OF REDD+ PROGRAMME AREAS



Legend

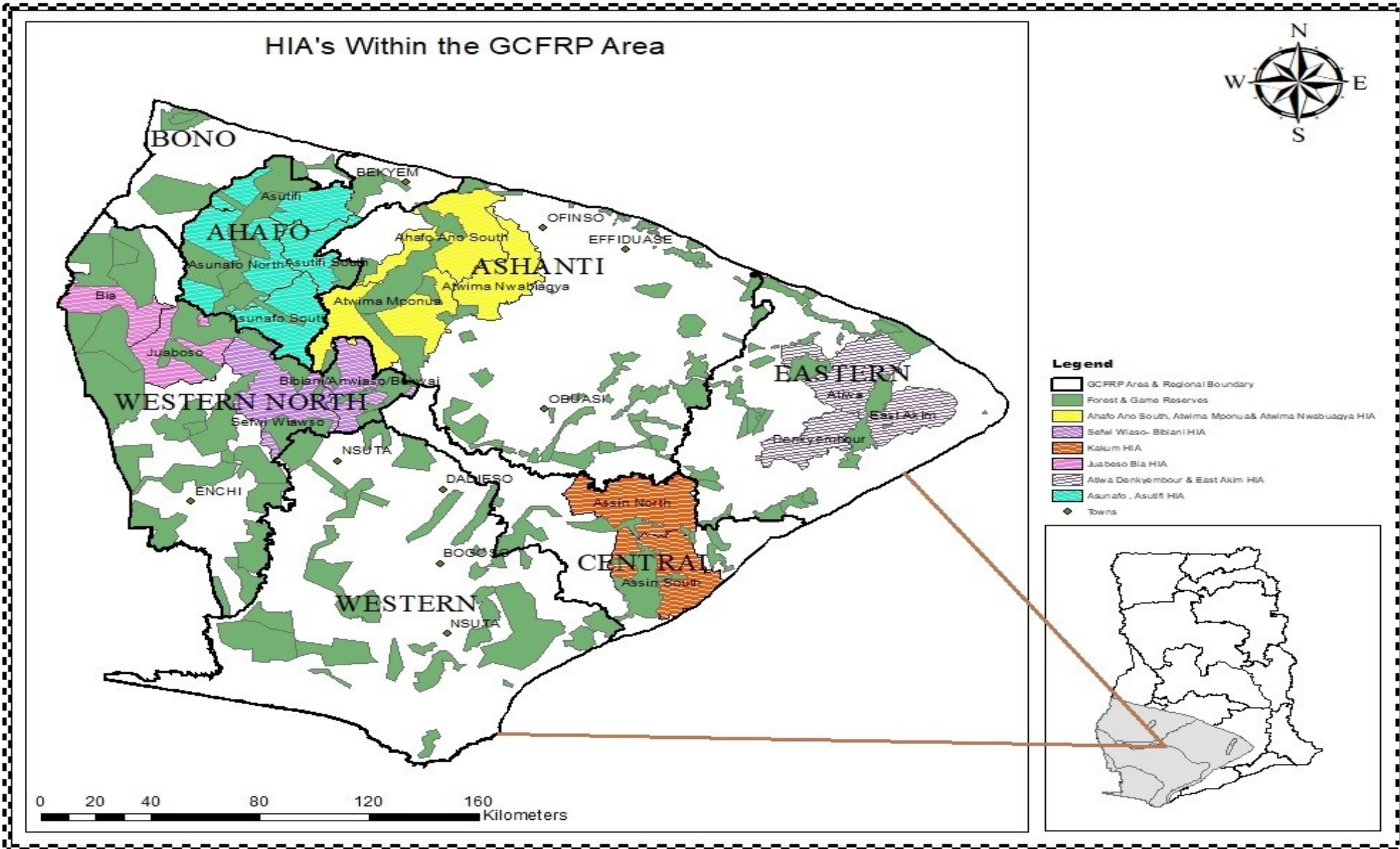
- Potential CREMA's
- Asunsfo, Asutifi HIA
- Ahafo Ano South, Atwima Mponua & Atwima Nwabiagya
- Kakum Hia
- Juabeso- Bia HIA
- Atiwa, Denkyembaour and East Akim Hia
- Sefwi Wiawso-Bibiani HIA
- Existing CREMA's
- Designated CREMA's
- Shea Park lands
- Selected Forest Reserves for MTS

REGION

- NORTH EAST
- NORTHERN
- SAVANNA
- UPPER EAST
- UPPER WEST
- Dry Semideciduous (fire zone)
- Dry semideciduous (inner zones)
- Savannah (south)
- Southern Marginal
- Transitional Zones with other REDD+ Programmes selection
- GCFRP AREA with HIA's



MAP OF GCFRP PROGRAM AREA



● GHANA COCOA FOREST REDD+ PROGRAM (GCFRP)

- Programme coordinated jointly by Forestry Commission and Ghana Cocoa Board

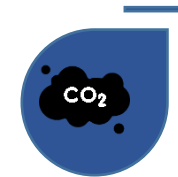


GOAL

Improve land-use and socio-economic development in the High Forest Zone (HFZ) and Cocoa growing areas of Ghana by increasing cocoa yield on farm lands through intensification with climate smart practices whilst preventing the expansion of cocoa farms into forest lands. By so doing, deforestation and forest degradation would be reduced to the barest minimum to preserve Ghana's HFZ in order to sustain its ecosystem functions and maintain a cultural heritage for future generations



USD50M as payments from results based Emission Reductions



The GCFRP has carbon emission reduction potential of 10 m tCO₂e for the first 6 years.

Ghana's forest has a total estimate of 5.7million hectares of forest with an above ground carbon of 173.0 Mg ha⁻¹ and 159.7 Mg ha⁻¹ for natural forest and plantation establishment respectively.

● GCFRP RATIONALE/OBJECTIVES



Curb illegal timber harvesting and mining, while incorporating shade trees in cocoa farming systems.

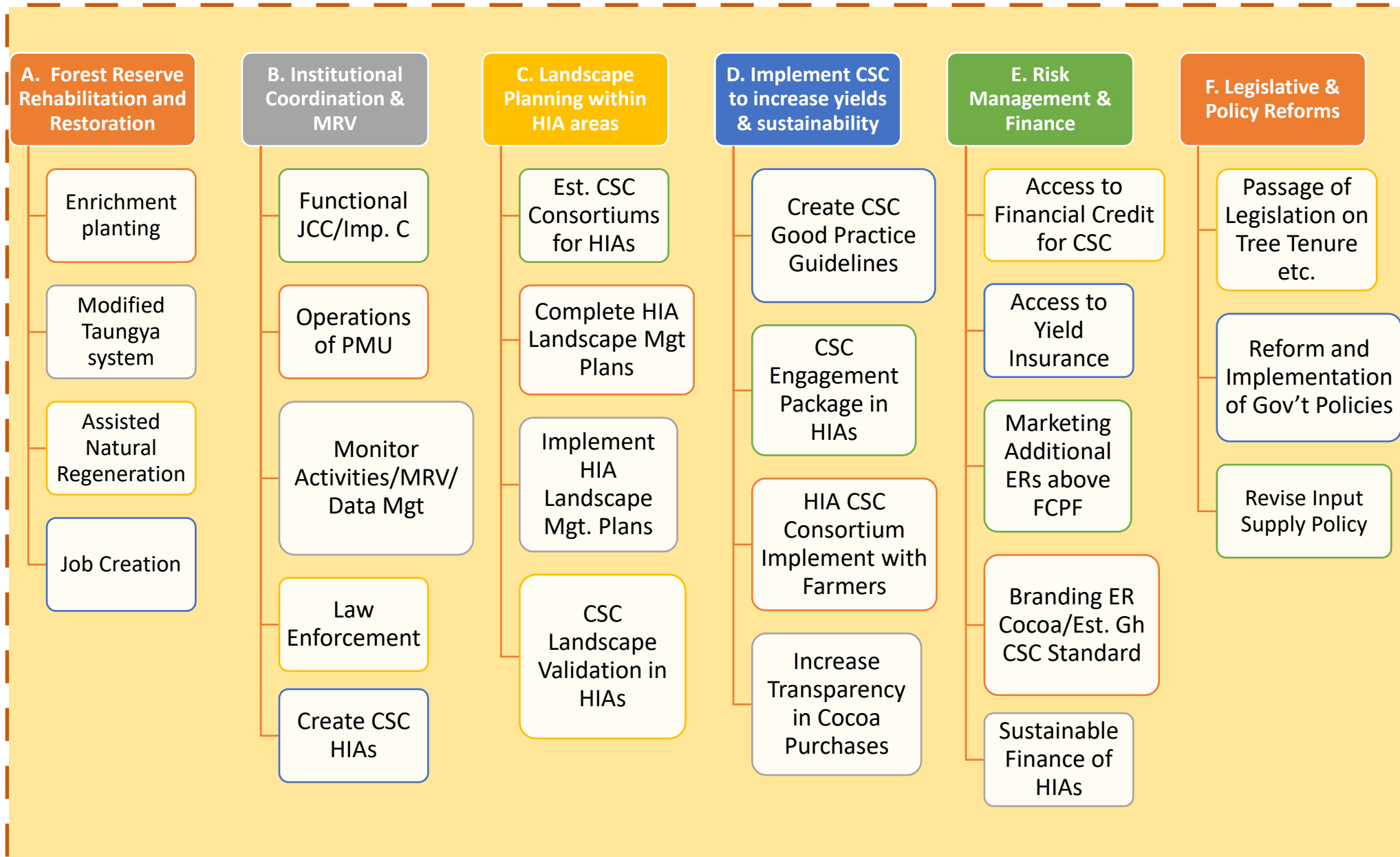


To secure the future of forests and make the cocoa sector climate-resilient, whilst sustaining and enhancing income and livelihood opportunities for farmers and forest users across the program area.

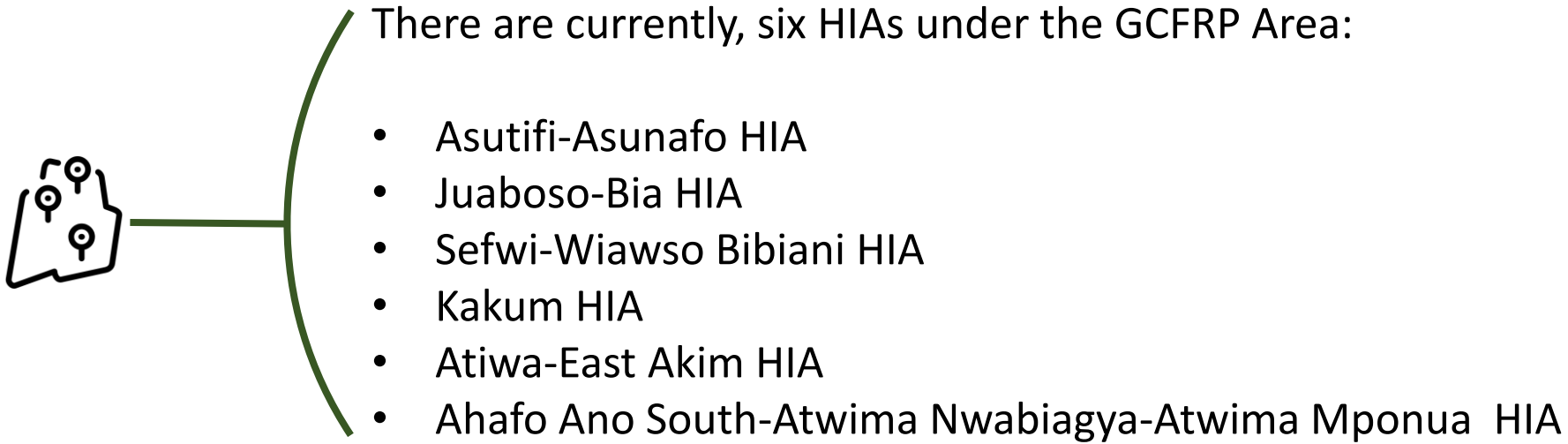


In the long term, the GCFRP will also contribute to the attainment of Ghana's Nationally Determined Contribution targets.

● GHANA COCOA FOREST REDD+ PROGRAM PILLARS



● IMPLEMENTATION APPROACH - HOTSPOT INTERVENTION AREA (HIA)



These HIAs are at different stages of development. The key parameters used for demarcation of the HIAs are:

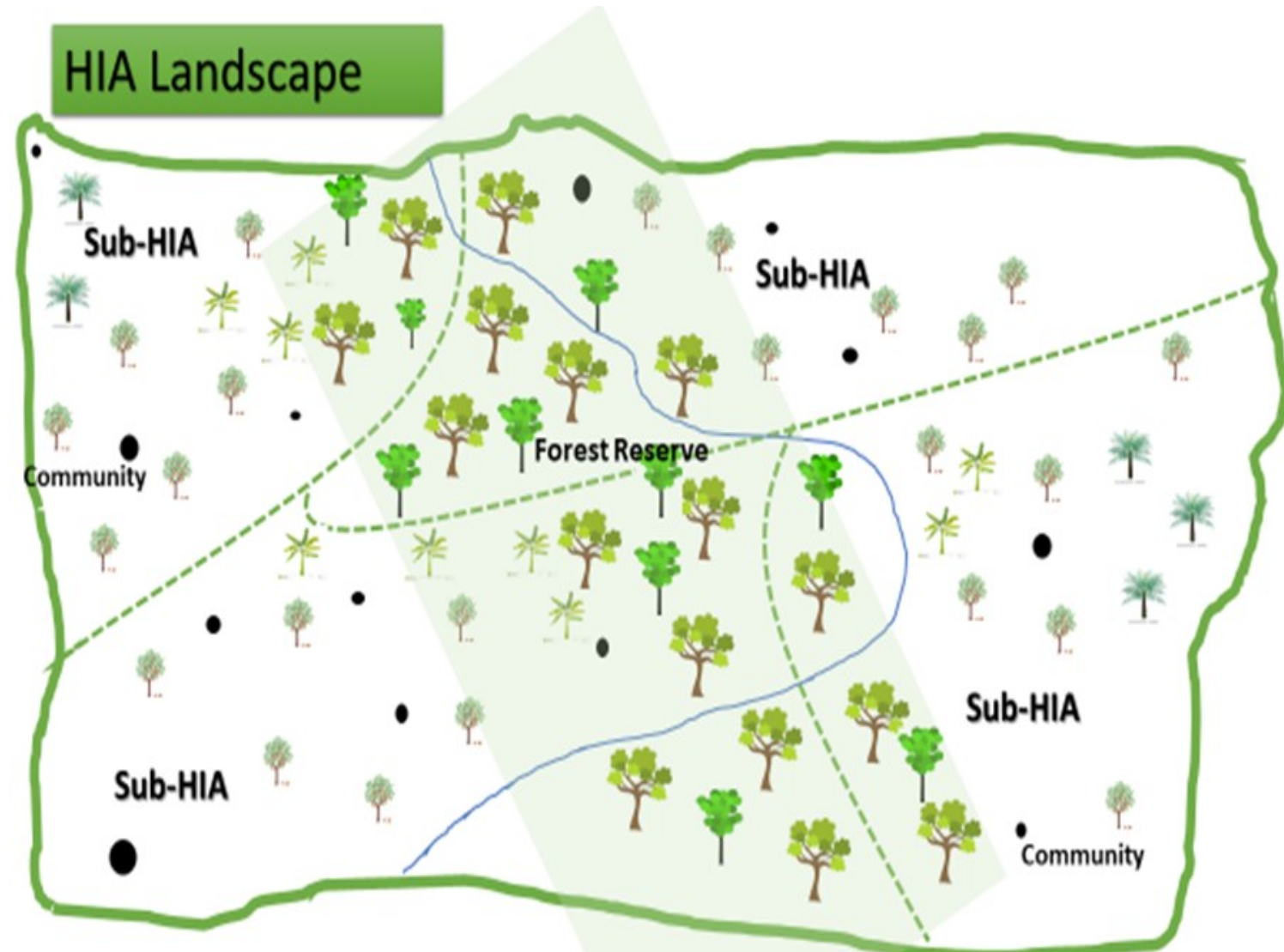
- Deforestation Trends
- Cocoa Production
- Drivers of Deforestation
- Potential Scale of Impacts and
- Presence of Key Stakeholders



UNDERSTANDING A HOTSPOT INTERVENTION AREA (HIA)

➤ HIA means:

- Hotspots of Cocoa production, threatened forests and with multiple stakeholders and actors.
- HIAs constitute 100,000-200,000 ha landscapes with farms, forests, and rivers, and other resources.
- Made up of communities, farmers and traditional leaders who voluntarily enter into a process to govern the natural resources on their land and in the landscape.
- HIAs are target landscape for implementation of REDD+ and sustainable, climate-smart Cocoa production.
- Have Private Sector Presence
- Have other Commodities than Cocoa



HIA GOVERNANCE PROCESS



Rapid Assessment of HIA Landscape: rapid analysis of the social-ecological status of a target area



Committee Formation Process:



Developing the constitution



Defining the HIA and Sub-HIA boundaries



Preparing the HIA and Sub-HIA bye laws



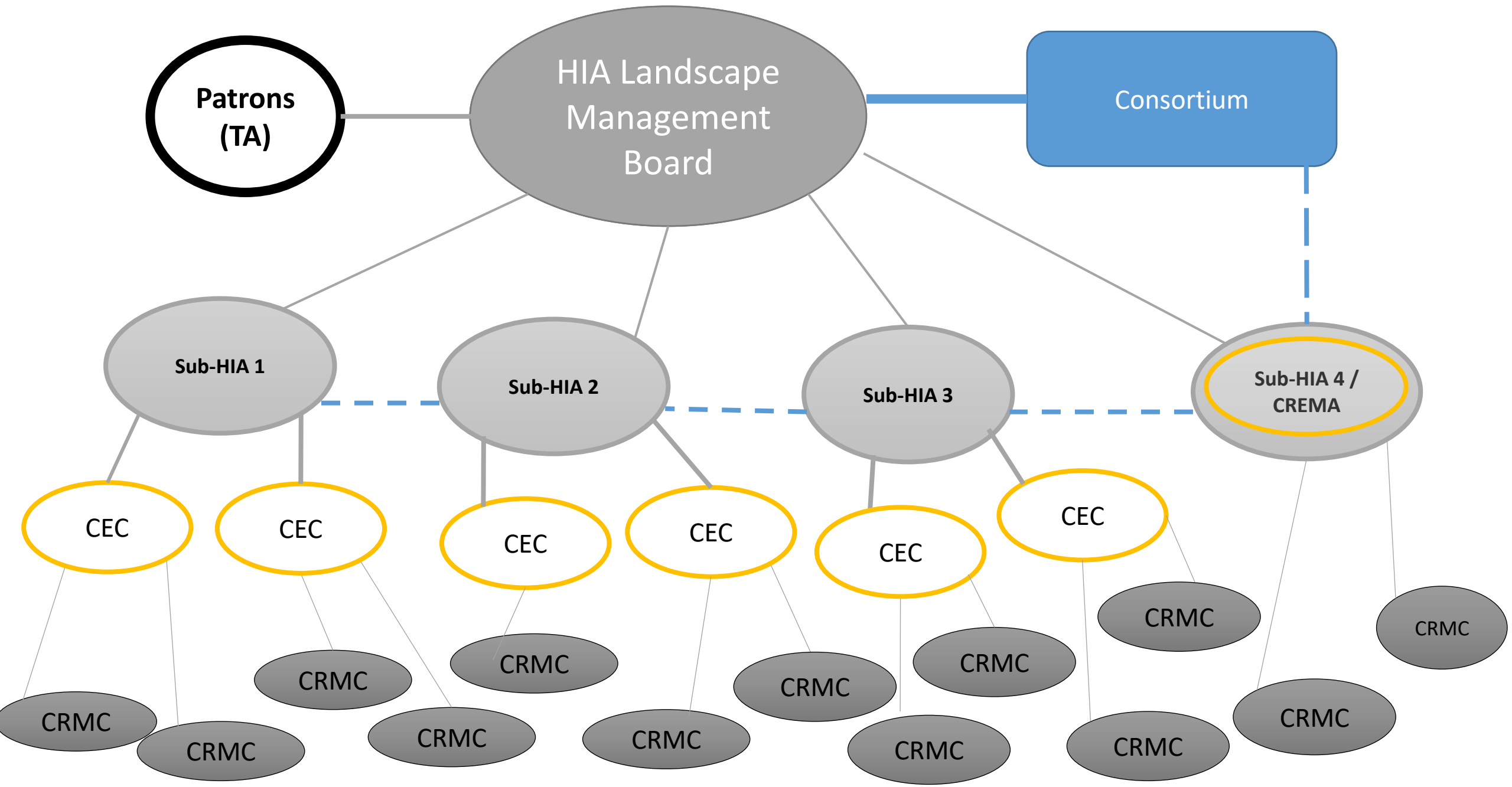
Entering Agreement with FC and Cocobod



Preparing an HIA Landscape Management Plan



Undertake Roles and Responsibilities under the Agreement



● ACTIVITIES IN THE ASUNAFO-ASUTIFI HIA



Located in the Ahafo Region of Ghana, the Asunafo-Asutifi Landscape encompasses three administrative districts namely: Asunafo North, Asunafo South, and Asutifi North



The total landscape area of 328,512 Ha, 62% is under agricultural production of which cocoa is a major component. Forest is a significant feature in the landscape, accounting for 32% of the land area.



Cocoa cultivation is the main socio-economic activity within the landscape, accounting for about 70-80% of the land-use under agriculture. The HIA accounts for about 10% of the national Cocoa output.



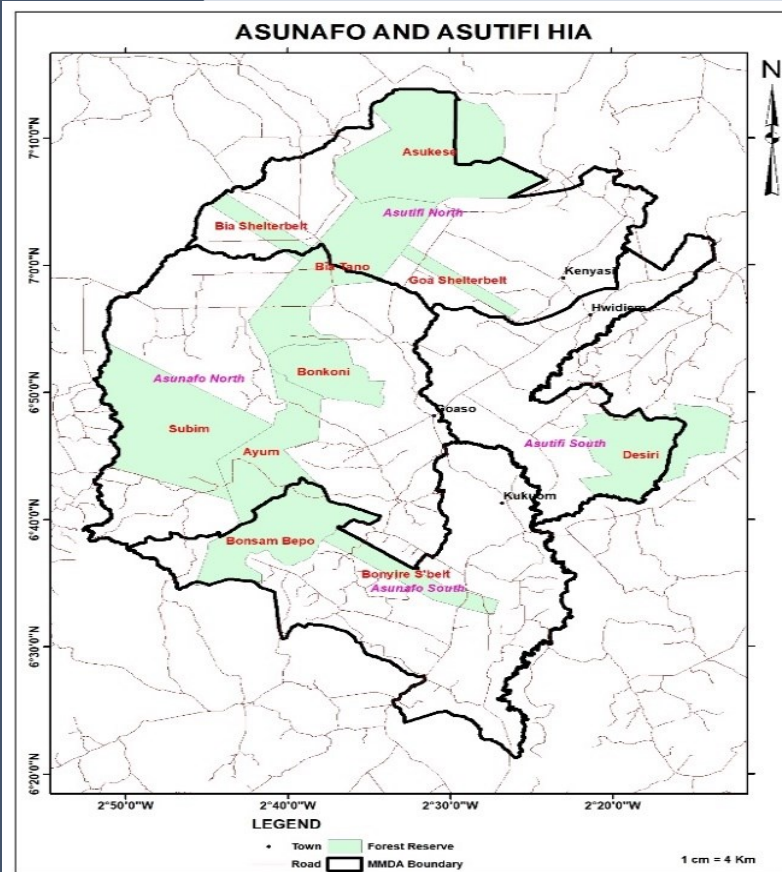
Developed a Land-use Management and Investment Plan and a Socio-Cultural baseline



Ongoing interventions aimed at cocoa sustainability in the Asunafo-Asutifi Landscape include the **Mondelez-UNDP International Cocoa Life Programme**, **Solidaridad Cocoa Rehabilitation and Improvement Project (CORIP)**, and the **COCOBOD Cocoa Artificial Hand Pollination**.



Has 11 member HMB, 5 Sub-HIAs, and 365 CRMCs that characterize its governance structures.



Strategic Partners: Forestry Commission, Cocoa Board, WCF, Mondelez, UNDP, Proforest, Tropenbos Ghana

● ACTIVITIES IN THE JUABESO BIA HIA



The project is currently being implemented in Bia West and Juaboso administrative Districts in the Western region of Ghana.



This is a high-value landscape with landmass covering 240,000 Ha. Population: 120,000



Cocoa Production: 60,000 MT (Juaboso: 12,000 MT, Bia West: 48,000 MT). 77% in the areas of Cocoa production, Timber, Oil Palm and Gold mining (majority engaged in agriculture).



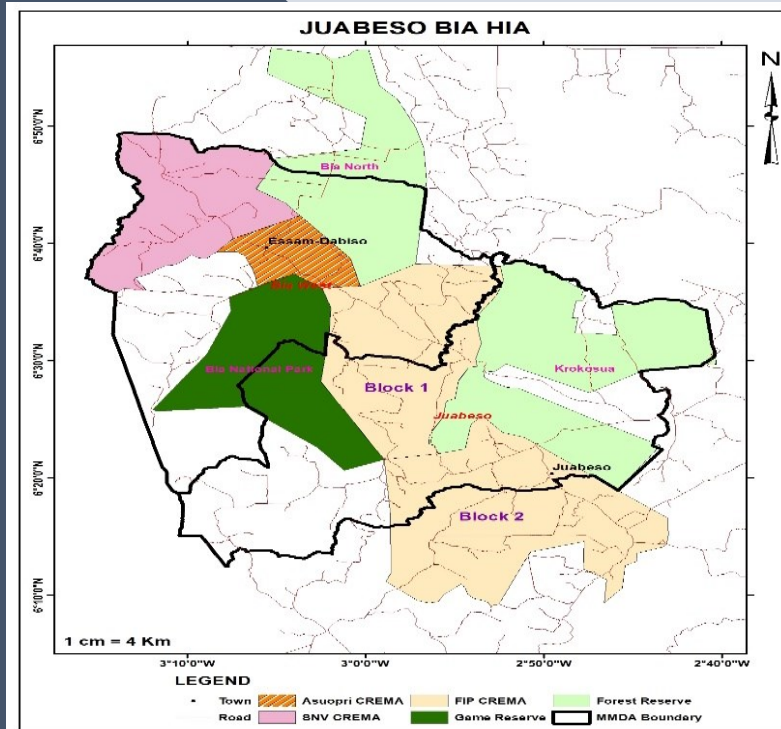
150,000 Ha (Bia National Park and Krokosua Forest Reserve)



Key interventions: Touton -Climate Smart Agriculture; Modified Taungya System, Enrichment Planting, Trees-On-Farm by Forestry Commission, and COCOBOD Cocoa Rehabilitation Programme. Establishment of a Safeguards team to supporting monitoring and compliance of Safeguards. Framework Agreement signed amongst Forestry Commission, Ghana COCOBOD, the Hotspot Management Board and other partners.

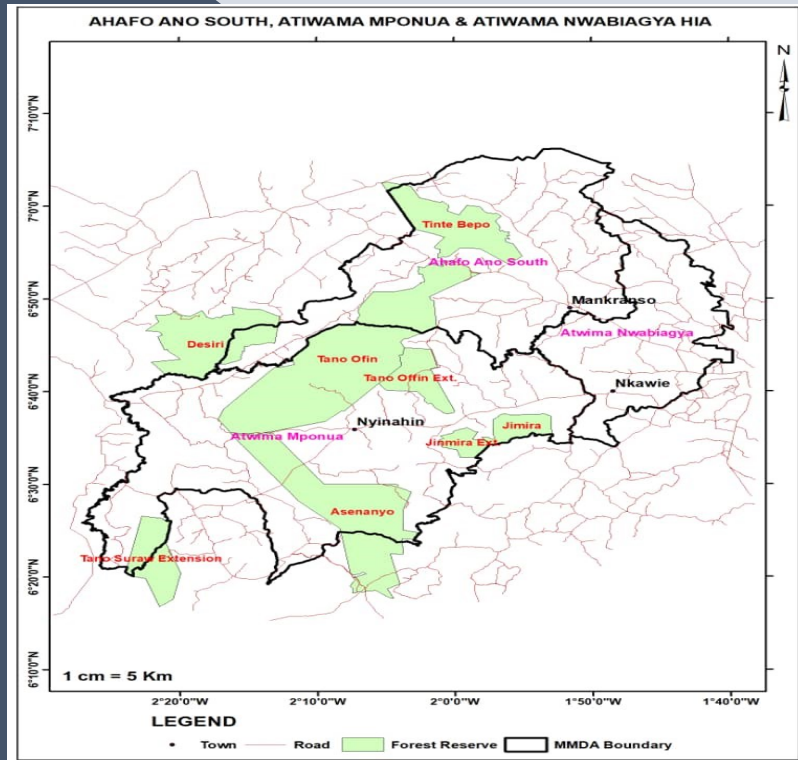


Made up of 13 member HMB, 6 Sub-HIAs with 7 member SHECs, 11 CREMAs & 5 non-CREMA areas as well as several CRMCs that characterize its built-up governance structures.



•Strategic Partners: Forestry Commission, Cocoa Board, WCF, SNV, Tropenbos Ghana Agro-Eco

● ACTIVITIES IN THE AHAFO-ANO HIA



Located in the Ahafo-Ano South, Atwima mponua & Atwima Nwabiagya districts in the Ashanti region of Ghana. .



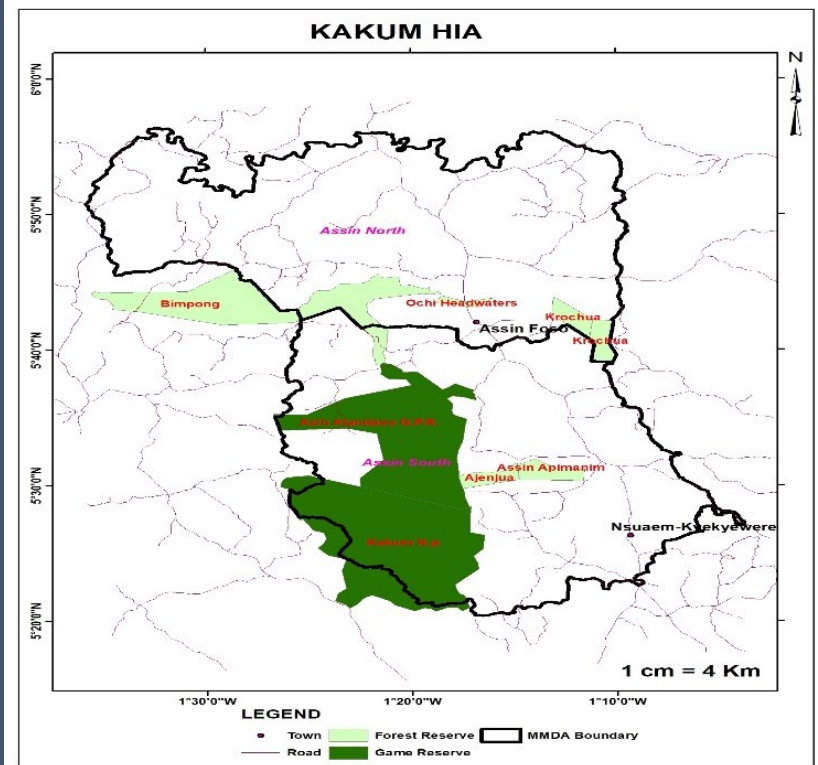
The landscape spreads over 365,673 Ha.



Key interventions: Modified Taungya System, Enrichment Planting, Trees-On-Farm by Forestry Commission, and COCOBOD Cocoa Rehabilitation Programme. Landscape governance developments near completion with the formation of CRMCS, CECs, SHECs and HMB

•**Strategic Partners:** Forestry Commission, Cocoa Board, WCF, Solidaridad, Mondelez & Olam.

● ACTIVITIES IN THE KAKUM HIA



Strategic Partners: Cocoa Board, Forestry Commission, WCF, Hershey, Ecom, Lindt Cocoa Foundation, Olam, Nyonkopa, Touton, NCRC



Located in the Central Region of Ghana. The HIA boasts of Kakum National park which is home to more than 500 butterfly species, seven primate species, 253 species of birds including five hornbill species and 100 species of mammals, reptiles and amphibians



It has established consortium made up of partners made up of reps from government institutions (FC, COCOBOD), District Assembly, Private Companies, Sub-HIA Executive committees, CREMA, and CRMC's. 3 Sub-HIAs by to be developed by close of 2021. 4 CREMAs have been developed forming 1 Sub-HIA. 3 more CREMAs have been developed with established CREMA for the formation of a 2nd Sub-HIA.



35 CREMA CSC extension trainers were trained to provide education on climate-smart cocoa production. Initiated sale of 3,000kg of Kombo nuts in 2020 at 10 GHC per kg and secured orders for 13,000 kg of Kombo nuts for the 2021 harvest season to enhance social and economic safety net for local communities



Key interventions: Kakum Cocoa Agroforestry Project; Modified Taungya System, Enrichment Planting, Trees-On-Farm by Forestry Commission, and COCOBOD Cocoa Rehabilitation Programme

● ACTIVITIES IN THE SEFWI-WIAWSO HIA



Located in the Western North Region of Ghana. The 244,000 hectare (ha) landscape contains five forest reserves – the Sui River (33,390 ha), the Tano Ehuru (17,610 ha), Tano Suhien (8,442 ha), Suhuma (36,030 ha) and Santomang Forest (2,120 ha) reserves.



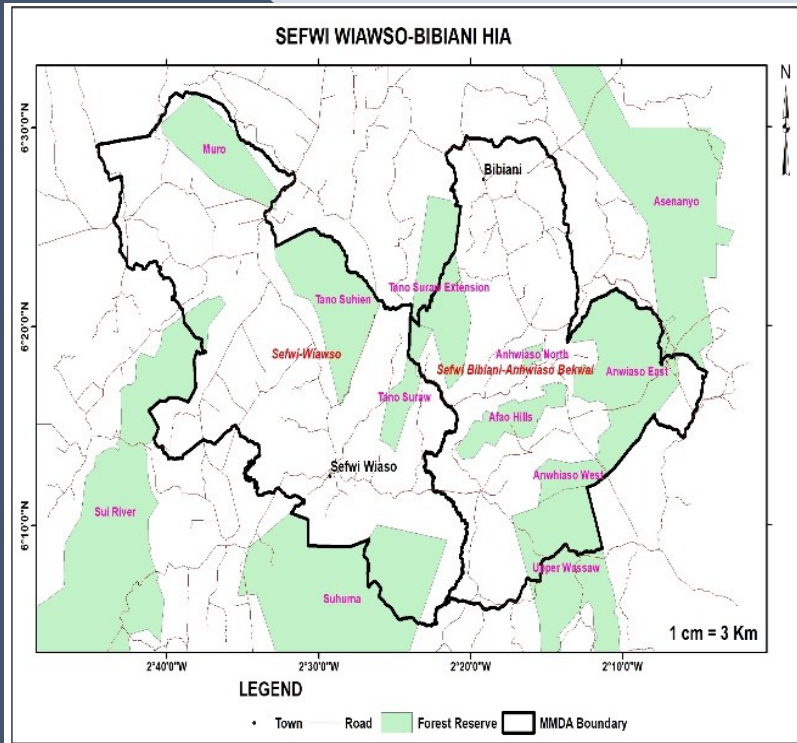
Cocoa production in Sefwi HIA is moderate due to low yields, CSSVD prevalence



The HIA engages over 100 communities across the landscape with 76 community management committees, 16 cluster management committees and 2 separate Landscape Management Boards.

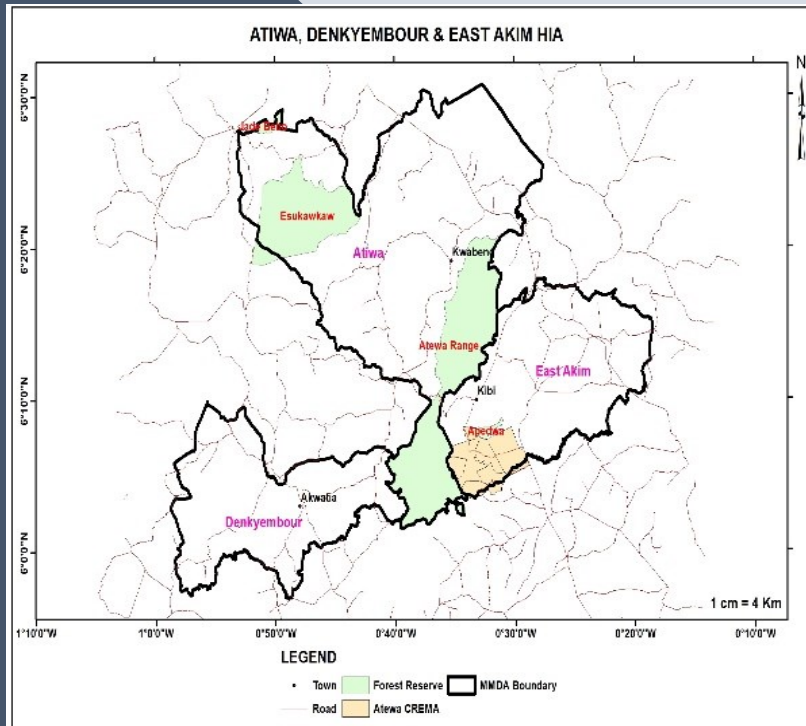


Key interventions: Kakum Cocoa Agroforestry Project; Modified Taungya System, Enrichment Planting, Trees-On-Farm by Forestry Commission, and COCOBOD Cocoa Rehabilitation Programme and Partnership for Livelihoods and Landscape Management Project by Olam



Strategic Partners: Cocoa Board, Forestry Commission, WCF, Olam & Rainforest Alliance

● ACTIVITIES IN THE ATEWA HIA



The HIA is located in the Eastern Region within the Atewa, Denkyemboour, and East Akim District of Ghana with a total area of 216,965 Ha.



No active work has begun in the Atewa HIA as formal commitments with partners are not yet agreed. The HIA has less activity specifically for the GCFRP but has on-going work particularly on advocacy for the protection of the Atewa Forest reserve.

Strategic Partners: Cocoa Board, Forestry Commission and WCF

Proposed Partners: are A Rocha Ghana, and CIFOR

BENEFICIARIES

HIA landscape stakeholders

Groups of farmers registered under the program



Communities



Traditional Authorities



Government agencies



Forestry Commission

Cocoa Board

Metropolitan, Municipal and District Assemblies

Private Sector

Cocoa Companies



Other private sector companies



**World Bank
Carbon Fund**

Ministry of Finance
REDD+ Dedicated Account

**4% Fixed Costs
to PMU**

**69% HIA
Account**

27% Government

**3% into buffer for eventual
disbursement**

**Financial Operational
Costs = 6%**
PMU Costs = 94%
(Net)

Farmer Groups = 58%
Traditional Authorities = 3%
HIA Communities = 39%
(Net)

FC = 85%
Cocobod = 7.5%
MMDAs = 7.5%
(Net)

USD 50,000,000

4% fixed to PMU= USD 2,000,000

69% HIA account= USD 34,500,000

27% Government= USD 13,500,000

**6% financial operational cost
= USD 120,000**

**94% PMU cost
= USD 1,880,000**

**58% Farmer groups
= USD 20,010,000**

**3% Traditional Authorities
= USD 1,035,000**

**39% HIA communities
= USD 13,455,000**

85% FC= USD 11,475,000

7.5% Cocobod= USD 1,012,500

7.5% MMDA= USD 1,012,500

● GCFRP CLIMATE FINANCING

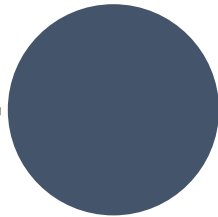


GCFRP (Readiness Fund and Carbon Fund)

- USD 50m Results Based Payment
- Collective Attribution
- Large Scale (Program with projects)
- Inclusive Governance Structures
- Equitable Benefit Sharing
- Private Sector Co-Financing
- Co-Benefits, Livelihoods

Voluntary Carbon Market Funds:

- Few Initiatives in Ghana
- Small Scale
- Project Focused
- Carbon Accounting difficult
- **Attractive to Private Sector**



● POTENTIAL FOR CLIMATE FINANCING AND INVESTMENTS



Green Climate Fund (Private Sector Component)

- Investment Financing
- Rural Enterprise Set-ups
- Assisted Farm Support
- Supply Chain Value Addition
- Premium Attraction for Sustainable Cocoa

Green Climate Fund (Results-Based Financing)

- Co-Benefits, Livelihoods

Voluntary Carbon Market Funds:

- LEAF (ART-TREES)
- Verra/JNR
- Gold Standard



What is the Objective of Investment or Financing?

- Demonstrate Sustainability?
- Green Supply Chain?
- Sustainability of Cocoa Beans Supply?
- Impact Investment?
- Profit making?

● NEXT STEPS

Secure Climate Financing beyond the Carbon Fund ERPA

- Voluntary Markets
- Compliance Markets
- Sustainable Financing Vehicle...Fund Management, Coordination
- Strategic Partnerships
- Develop other REDD+ Programs
- Livelihood Support Interventions